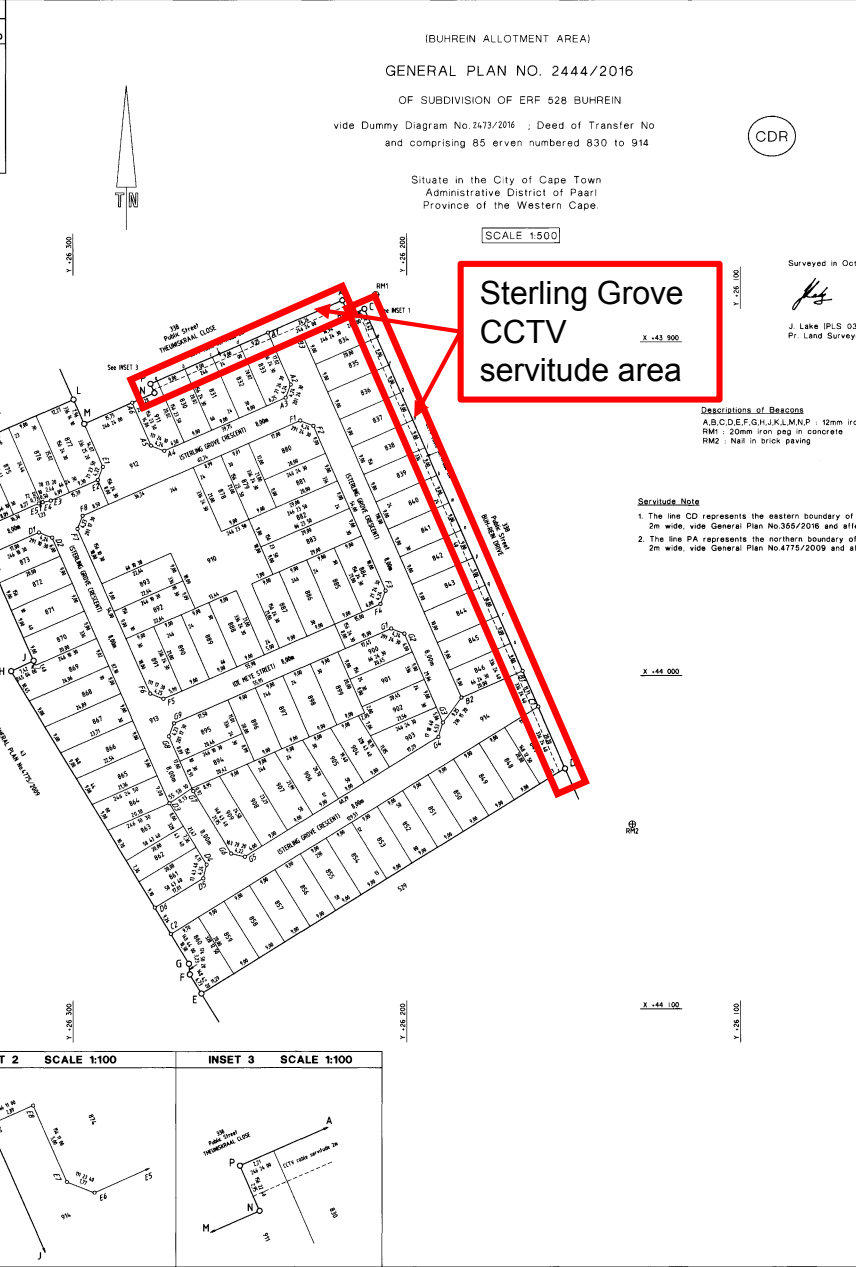


CO-ORDINATES			MAIN FIGURE			CO-ORDINATES		
System	WGS 1984	metres	SIDES	DIRECTIONS	System	WGS 1984	metres	
Constants: Y ±	0.00	X +3 700 000.00	METRES		Constants: Y ±	0.00	X +3 700 000.00	
BLOCK CORNERS :								
A1	- 26 241.49	- 43 897.19	AB	4.95	337 00 4.0	A	- 26 219.74	- 43 887.48
A2	- 26 236.88	- 43 912.79	BC	5.05	247 00 30.0	B	- 26 217.23	- 43 892.04
A3	- 26 231.22	- 43 916.74	CD	150.33	336 24 4.0	C	- 26 212.58	- 43 890.07
A4	- 26 272.65	- 43 932.65	DE	128.22	58 13 0.0	D	- 26 152.52	- 44 027.83
A5	- 26 274.65	- 43 931.10	EF	6.73	148 42 2.0	E	- 26 261.51	- 44 085.39
A6	- 26 282.23	- 43 918.22	FG	3.23	174 50 20.0	F	- 26 265.01	- 44 089.47
B1	- 26 185.29	- 43 951.10	GH	64.97	158 44 0.0	G	- 26 265.30	- 44 086.41
B2	- 26 183.61	- 44 006.60	IJ	7.42	245 04 0.0	H	- 26 318.57	- 43 998.68
B3	- 26 230.84	- 43 895.48	JK	42.58	246 23 30.0	I	- 26 311.84	- 43 995.54
B4	- 26 217.14	- 43 892.48	KL	7.94	336 14 10.0	J	- 26 338.89	- 43 934.29
C1	- 26 180.60	- 44 009.22	LM	23.03	246 24 0.0	K	- 26 259.97	- 43 917.23
C2	- 26 270.69	- 44 077.54	MN	2.85	156 22 4.0	L	- 26 295.56	- 43 974.52
C3	- 26 310.29	- 43 857.12	NP	62.72	246 24 0.0	M	- 26 275.24	- 43 915.39
C4	- 26 306.28	- 43 958.45	PA			N	- 26 276.74	- 43 912.59
C5	- 26 271.09	- 44 038.33						
C6	- 26 259.95	- 44 056.68						
C7	- 26 282.96	- 44 040.88						
C8	- 26 275.49	- 44 069.63						
C9	- 26 285.78	- 43 943.88						
C10	- 26 291.03	- 43 937.41						
C11	- 26 292.57	- 43 941.35						
C12	- 26 306.68	- 43 947.51						
C13	- 26 309.09	- 43 948.01						
C14	- 26 310.27	- 43 948.39						
C15	- 26 325.23	- 43 955.00						
C16	- 26 326.88	- 43 954.35						
C17	- 26 328.90	- 43 950.94						
C18	- 26 331.54	- 43 923.57						
C19	- 26 327.93	- 43 925.12						
C20	- 26 206.32	- 43 974.61						
C21	- 26 207.86	- 43 978.50						
C22	- 26 272.92	- 44 006.97						
C23	- 26 276.88	- 44 005.42						
C24	- 26 298.69	- 43 956.02						
C25	- 26 297.15	- 43 952.08						
C26	- 26 204.55	- 43 985.89						
C27	- 26 200.71	- 43 987.44						
C28	- 26 189.09	- 44 014.06						
C29	- 26 190.44	- 44 015.39						
C30	- 26 248.48	- 44 054.36						
C31	- 26 252.59	- 44 051.38						
C32	- 26 243.98	- 44 034.62						
C33	- 26 271.22	- 44 018.23						
C34	- 26 249.69	- 44 014.28						

TOWN SURVEY MARKS		
⊕ KR20	- 25 928.39	- 46 111.60
⊕ KR21	- 26 064.10	- 45 931.33

REFERENCE MARKS :		
RH1	- 26 209.27	- 43 885.84
RH2	- 26 132.43	- 44 044.59

AREAS		
ERF NO	SQ M	REACONS PLACED VIDE S.R.
830	180	
831	180	
832	180	
833	180	
834	180	
835	180	
836	180	
837	180	
838	180	
839	180	
840	180	
841	180	
842	180	
843	180	
844	200	
845	180	
846	180	
847	207	
848	180	
849	180	
850	180	
851	180	
852	180	
853	180	
854	180	
855	180	
856	180	
857	180	
858	180	
859	180	
860	207	
861	178	
862	180	
863	187	
864	180	
865	198	
866	180	
867	219	
868	180	
869	251	
870	180	
871	180	
872	180	
873	174	
874	181	
875	220	
876	124	
877	303	
878	189	
879	189	
880	236	
881	180	
882	261	
883	261	
884	185	
885	189	
886	189	
887	189	
888	189	
889	189	
890	189	
891	185	
892	200	
893	204	
894	202	
895	180	
896	180	
897	180	
898	180	
899	180	
900	180	
901	184	
902	195	
903	180	
904	169	
905	180	
906	192	
907	204	
908	215	
909	223	
910	1361	
911	164	
912	2677	
913	1535	
914	1421	



IBUHREIN ALLOTMENT AREA)
GENERAL PLAN NO. 2444/2016
 OF SUBDIVISION OF ERF 528 BUHREIN
 vide Dummy Diagram No.2473/2016 ; Deed of Transfer No
 and comprising 85 erven numbered 830 to 914



Situate in the City of Cape Town
 Administrative District of Paarl
 Province of the Western Cape

SCALE 1:500

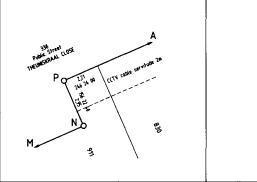
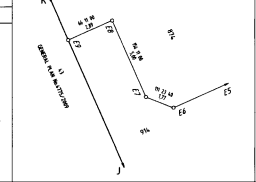
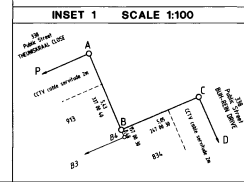
**Sterling Grove
 CCTV
 servitude area**

Surveyed in October 2016 by me

 J. Lake (PLS 0328)
 Pr. Land Surveyor

Designations of Resours
 A,B,C,D,E,F,G,H,I,J,K,L,M,N,P : 12mm iron pag
 RM1 : 20mm iron pag in concrete
 RM2 : Nail in brick paving

- Servitude Note**
- The line CD represents the eastern boundary of a CCTV cable servitude 2m wide, vide General Plan No.355/2016 and affects erven 834 to 847 and 914.
 - The line PA represents the northern boundary of a CCTV cable servitude 2m wide, vide General Plan No.4775/2008 and affects erven 820 to 823, 911 and 912



SG No. 2444/2016

Approved:
 for Surveyor-General
 Date: 09-12-2016

Approved in terms of Sect 18(1b) of the City of Cape Town By-law 2015
 Case ID: 7835512
 Date: 27 October 2016

ACT 70/1970 NOT APPLICABLE

ENDORSEMENTS					
NO	AMENDMENT	ADDITION	AUTHORITY	SIGN	DATE

SURVEYOR-GENERAL OFFICE NOTES